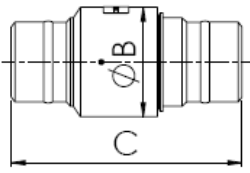




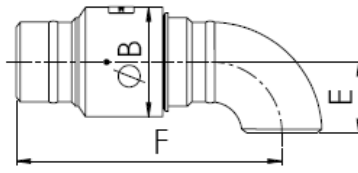
# LARGE BORE SWIVEL JOINTS

NOMINAL BORE 8" TO 24"

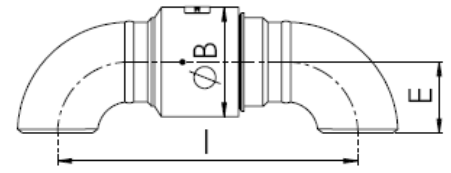
WELD END



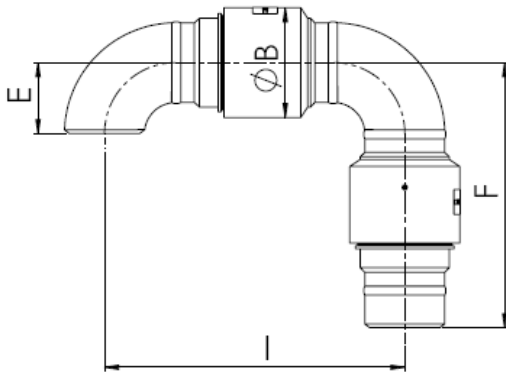
Style: 1 (20)



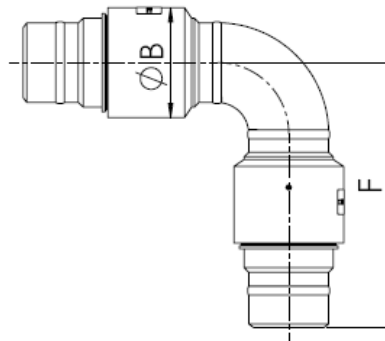
Style: 2 (30)



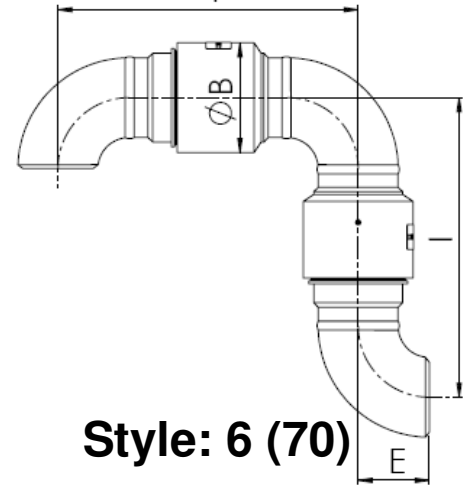
Style: 3 (40)



Style: 4 (50)



Style: 5 (60)



Style: 6 (70)

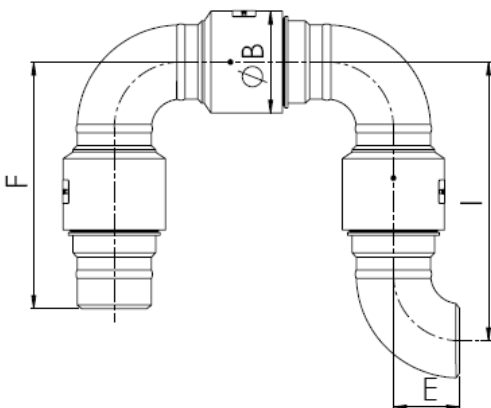
BORE		B Dia	C	WELD END (LR)			WELD END (SR)		
(in.)	(mm)	(mm)		E	F	I	E	F	I
8"	193	283	470	305	702	934	203	600	730
10"	247	337	470	381	778	1086	254	651	832
12"	298	388	470	457	854	1238	305	702	934
14"	330	420	470	533	930	1391	356	753	1035
16"	380	470	470	610	1007	1543	406	803	1137
18"	431	521	470	686	1083	1696	457	854	1238
20"	482	572	470	762	1159	1848	508	905	1340
24"	584	674	470	914	1311	2153	610	1007	1543

- Allowances for welding = 2mm per weld.
- In a welded system, 75mm of pipe is recommended between new welds and the swivel joint to allow cooling and prevent seal damage.
- The swivel bore is schedule XS unless otherwise specified.
- The fittings and elbows are schedule STD unless otherwise specified.

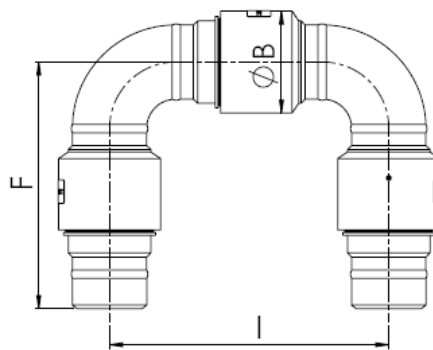
ROTAFLOW PROVIDE A DESIGN SERVICE

Assistance can be given on the configuration of joints for space saving in difficult areas, high pressure and larger bore designs. PTFE seals are offered as standard. Other materials including Nitrile, Fluorocarbon (Viton®), Aflas®, HNBR, EPDM are available.

Aflas is a trademark of Asahi Glass.  
Viton is a trademark of DuPont Performance Elastomers



Style: 7 (80)



Style: 8 (10)

Copyright © 2016 Rotaflow FV LTD

Drawings above are not to scale and are used for graphical representation only.

## Rotaflow FV Limited

Rotec House, Bingswood Trading Estate, Whaley Bridge, High Peak, SK23 7LY  
 www.rotaflow.com tel:+44(0)1663 735003 fax:+44(0)1663 735006  
 email:sales@rotaflow.com

Tech Spec:  
221/161026  
Page 1 of 1