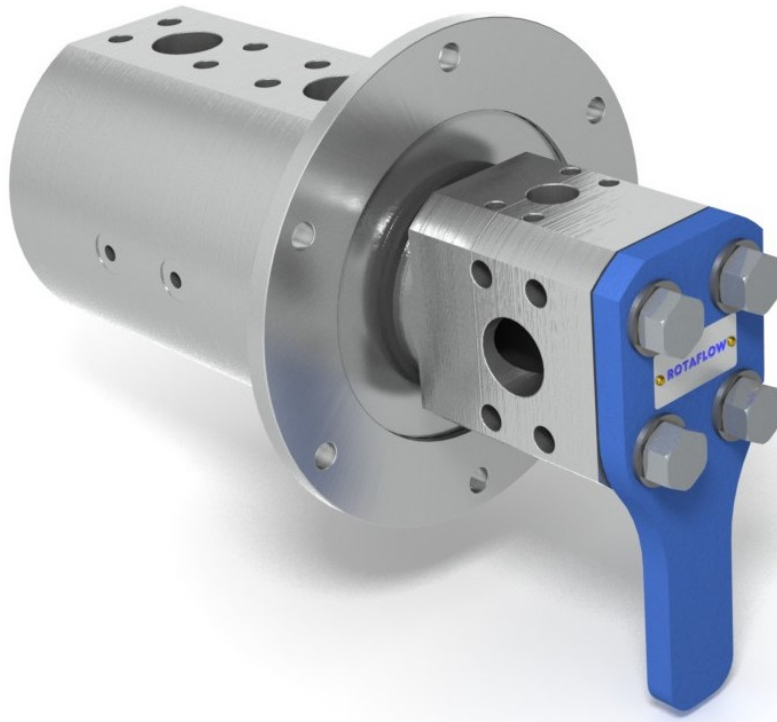


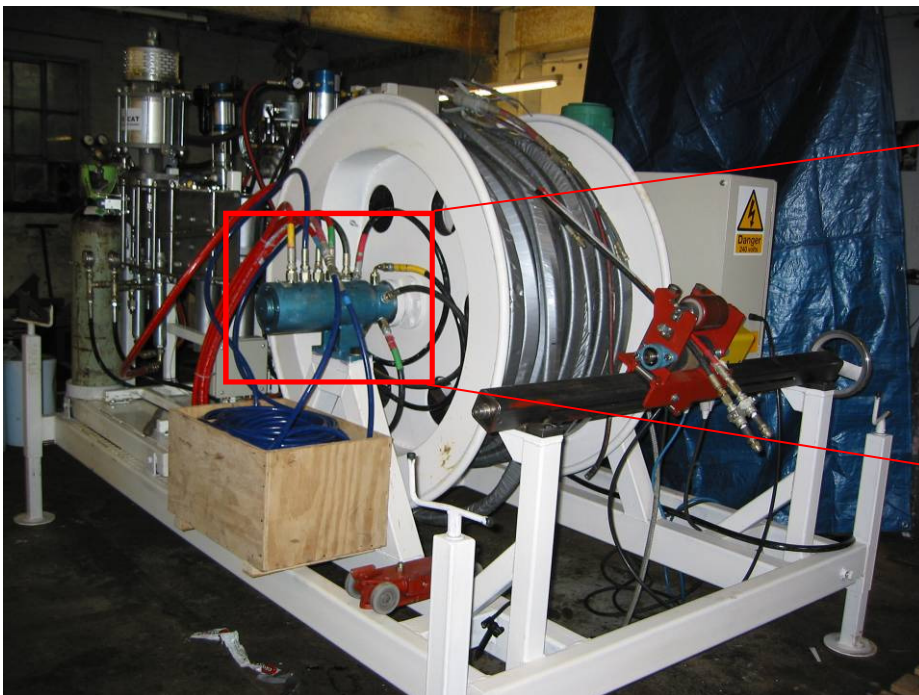


# M SERIES SWIVEL JOINTS

## MULTI-PORT SWIVEL JOINTS



- Multiple flows down a common axis
- Robust design to handle high mechanical loads
- Individually designed to suit specific applications
- Choice of materials and seals for compatibility
- Wide range of mounting solutions available



Copyright © 2016 Rotaflow FV LTD

### **Rotaflow FV Limited**

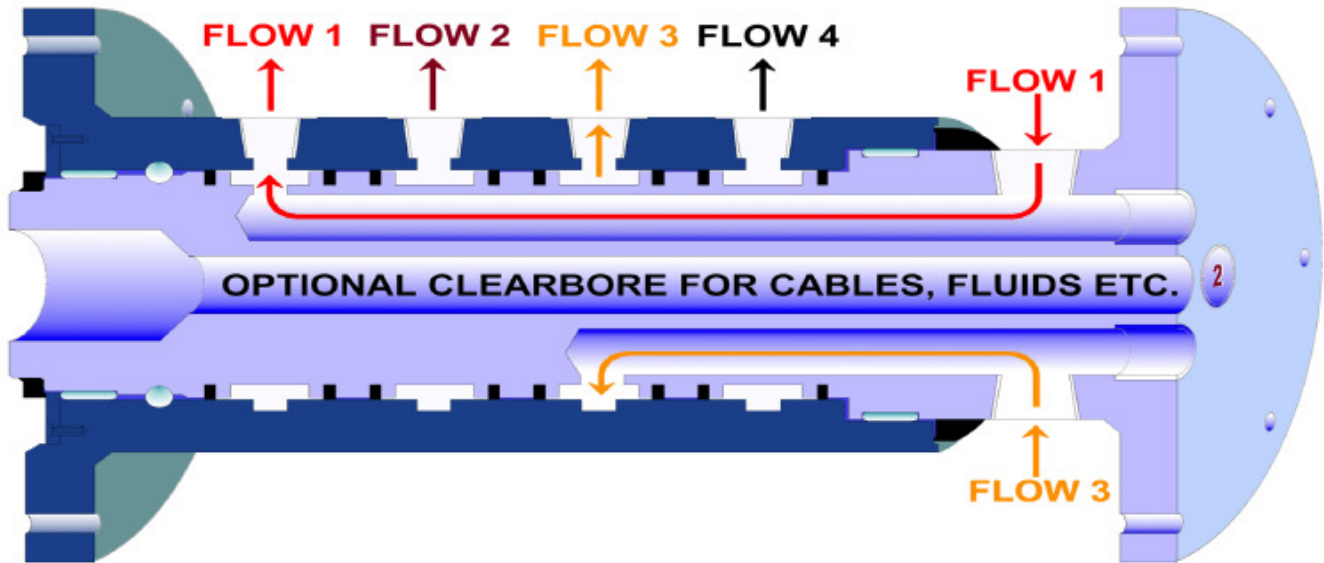
Rotec House, Bingswood Trading Estate, Whaley Bridge, High Peak, SK23 7LY  
www.rotaflow.com tel:+44(0)1663 735003 fax:+44(0)1663 735006  
email:sales@rotaflow.com

Tech Spec:  
117/161024  
Page 1 of 2



# M SERIES SWIVEL JOINTS

MULTI-PORT SWIVEL JOINTS



Sliced view of 4 port design

Multiport swivel joints cater for 2 or more flows along a central axis

Based on the development of our 'SK' series swivels, the patented needle roller design keeps sleeve and casing aligned under high radial loads, often replacing the need for external bearings. Seals straddle each port in turn to ensure individual flows without leakage.



Please supply us with the following details:

1. Number of ports, size of each port and preferred orientation of each port.
2. Speed of rotation.
3. Type of fluid—temperature range and pressure.

We will be pleased to quote the most suitable Multiport for your needs.

Copyright © 2016 Rotaflow FV LTD

## Rotaflow FV Limited

Rotec House, Bingswood Trading Estate, Whaley Bridge, High Peak, SK23 7LY  
www.rotaflow.com tel:+44(0)1663 735003 fax:+44(0)1663 735006  
email:sales@rotaflow.com

Tech Spec:  
117/161024  
Page 2 of 2