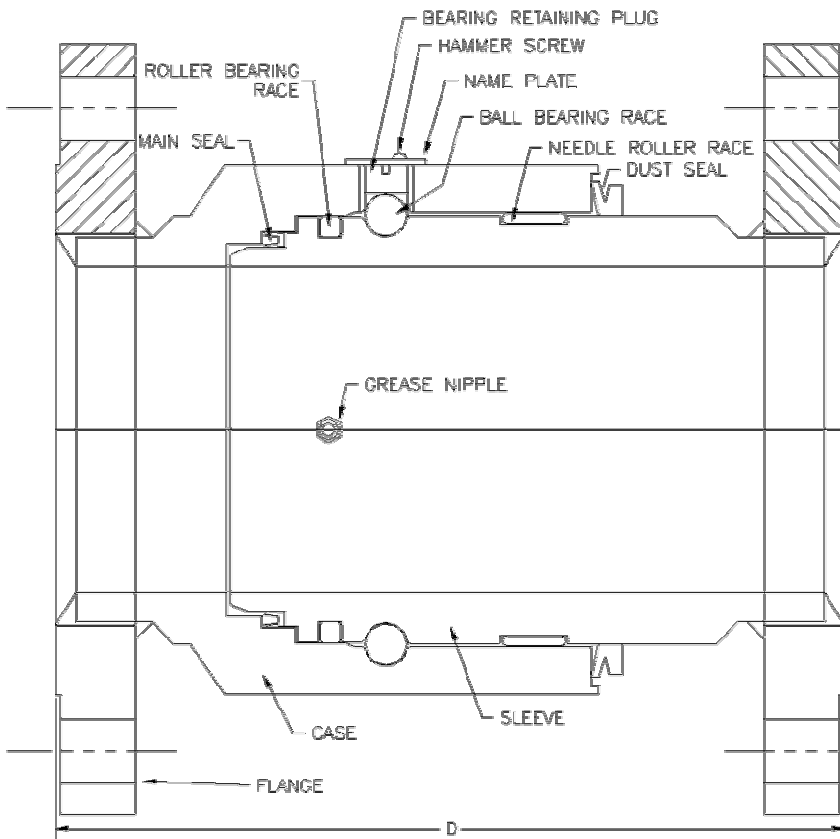




SWIVEL JOINTS

Load Capacity 3/4" To 6".



- Available with any welded or machined flanges, fittings or elbows.
- Standard dust seal with grease nipple allows grease purging (old grease expelled through dust seal), optional submerged/sealed for life duty seal available.
- Double roller race for high radial and bending loads.
- Full compliment ball race for high axial loads.
- Clear full bore flow for minimum pressure loss.
- Carbon/Graphite filled PTFE seal for wide chemical compatibility, low torque, high speed and long life.
- NACE MR 0175** certified if required.
- Stocked Carbon Steel and 316L stainless steel. Most other materials available on application.
- Optional high temperature (200 Deg C / 400 Deg F) operation.
- Optional leak detect port.
- Additional ball races for high pressure applications.
- Hardened carbon steel available for high load or abrasive applications.
- Other modifications as required.

Nominal Size	Max Radial Load	Max Axial Load Per Ball Race*	Max Bending Load.	Max Static Test Pressure per race*	Max Pressure per race* Slow rotating
	kN	kN	Nm	Bar (PSI)	Bar (PSI)
3/4"	7	9	105	101 (1460)	58 (834)
1"	7	9	105	101 (1490)	58 (834)
1 1/2"	7	9	105	101 (1490)	58 (834)
2"	12	15	278	69 (1000)	39 (571)
3"	41	21	518	53 (769)	30 (439)
4"	54	37	675	51 (745)	29 (426)
5"	54	37	675	51 (745)	29 (426)
6"	79	51	1364	36 (518)	20 (296)

Most standard swivel bodies can accommodate more races. Please call our technical department for high load applications.

For dimensions see tech spec: 120 'Nominal Bore 1" to 6".'

Rotaflow provide a refurbishing service with speedy turnaround of joints.

We provide a design service for difficult applications. Please call us to discuss your application. .

ROTAFLOW FV LIMITED

Rotec House, Bingswood Trading Estate, Whaley Bridge,
High Peak, SK23 7LY. Tel: 01663 735003 Fax: 01663 735006
E-mail: sales@rotaflow.com Web: www.rotaflow.com

Tech Spec:
130/050421
Page 1 of 1