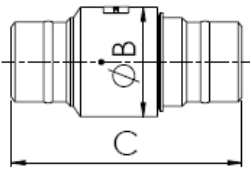




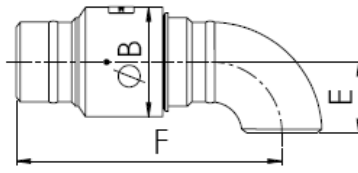
SK SERIES SWIVEL JOINTS

NOMINAL BORE 1" TO 6"

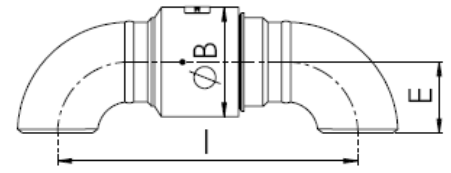
WELD END



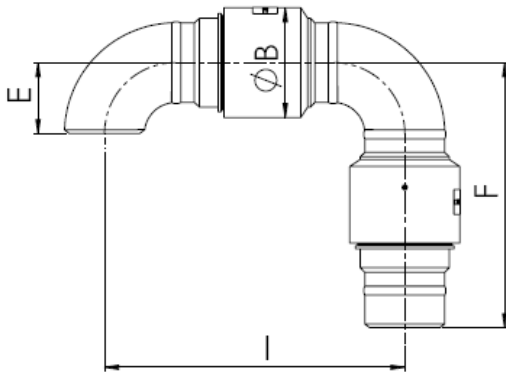
Style: 1 (20)



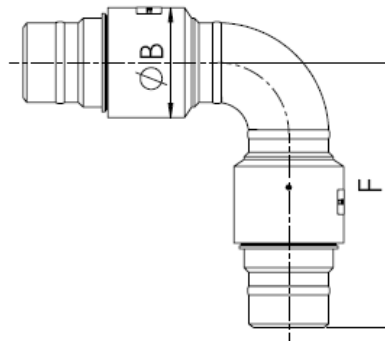
Style: 2 (30)



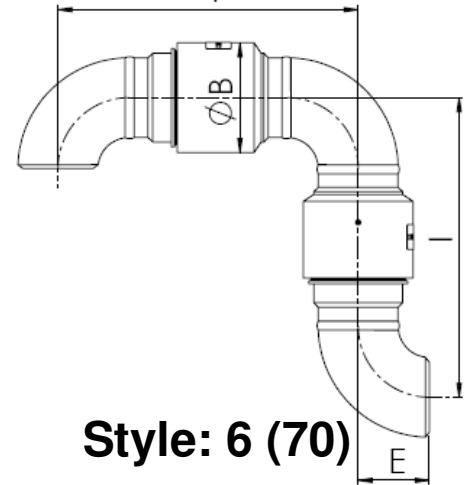
Style: 3 (40)



Style: 4 (50)



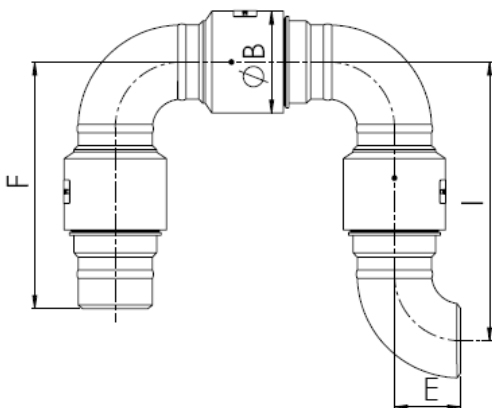
Style: 5 (60)



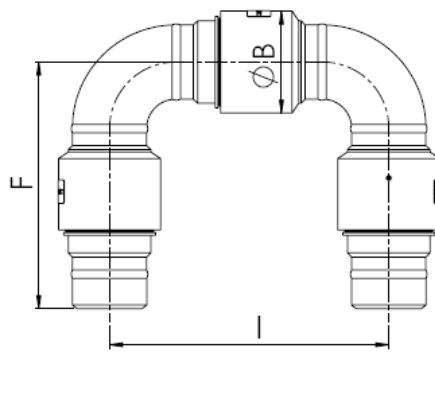
Style: 6 (70)

BORE		B Dia	WELD END			
(in.)	(mm)	(mm)	C	E	F	I
1"	24	68	280	38	220	168
1 1/2"	38	79	280	57	240	211
2"	49	94	300	76	270	258
3"	73	121	330	76	310	283
4"	97	157	330	102	380	430
5"	122	185	330	127	405	480
6"	146	216	350	152	430	510

- Allowances for welding = 2mm per weld.
- In a welded system, 75mm of pipe is recommended between new welds and the swivel joint to allow cooling and prevent seal damage.
- The swivel bore is schedule XS (80) unless otherwise specified.
- The fittings and elbows are schedule STD (40) unless otherwise specified.
- Weld end elbows are supplied long radius on sizes 1", 1 1/2" & 2"- short radius on sizes 3", 4" and 6".
- **Note:-** 3" Flanged only: Long radius



Style: 7 (80)



Style: 8 (10)

ROTAFLOW PROVIDE A DESIGN SERVICE

Assistance can be given on the configuration of joints for space saving in difficult areas, high pressure and larger bore designs. PTFE seals are offered as standard. Other materials including Nitrile, Fluorocarbon (Viton®), Aflas®, HNBR, EPDM are available.

Aflas is a trademark of Asahi Glass.
Viton is a trademark of DuPont Performance Elastomers

Drawings above are not to scale and are used for graphical representation only.

Copyright © 2016 Rotaflow FV LTD

Rotaflow FV Limited

Rotec House, Bingswood Trading Estate, Whaley Bridge, High Peak, SK23 7LY
www.rotaflow.com tel:+44(0)1663 735003 fax:+44(0)1663 735006
email:sales@rotaflow.com

Tech Spec:
217/170814
Page 1 of 1