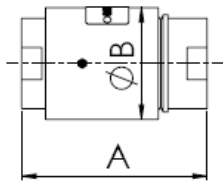




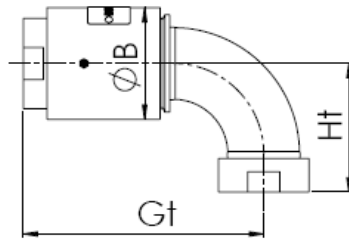
SK SERIES SWIVEL JOINTS

NOMINAL BORE 1" TO 3"

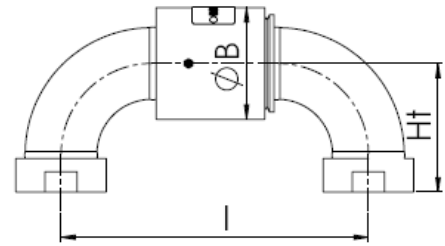
THREADED



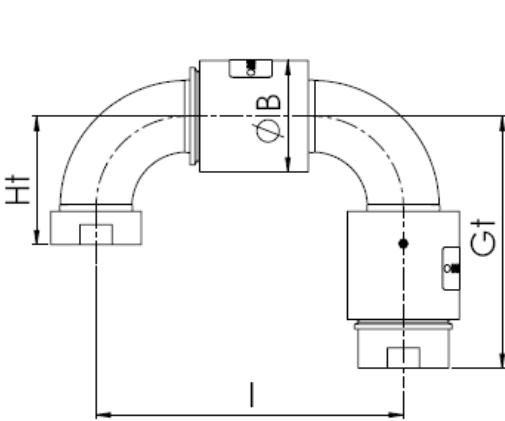
Style: 1 (20)



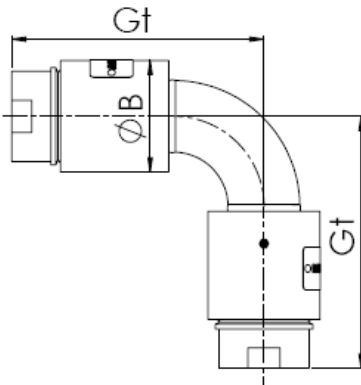
Style: 2 (30)



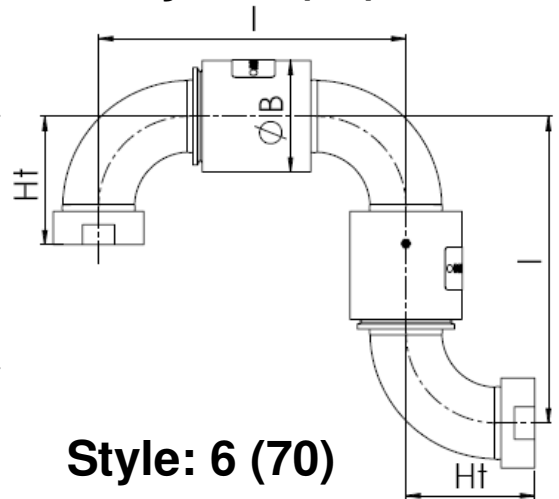
Style: 3 (40)



Style: 4 (50)



Style: 5 (60)



Style: 6 (70)

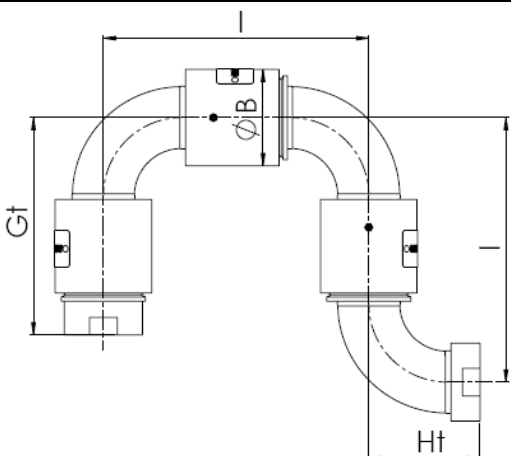
| BORE | | BSPT OR ISO/R7 | | | | |
|--------|------|----------------|-----|-----|-----|-----|
| (in.) | (mm) | A | B | Gt | Ht | I |
| 1" | 24 | 137 | 68 | 151 | 63 | 168 |
| 1 1/2" | 38 | 147 | 79 | 168 | 91 | 211 |
| 2" | 49 | 156 | 94 | 202 | 108 | 258 |
| 3" | 73 | 192 | 121 | 233 | 113 | 283 |

- Allowances for welding = 2mm per weld.
- The swivel bore is schedule XS (80) unless otherwise specified.
- The fittings and elbows are schedule STD (40) unless otherwise specified.
- Elbows are supplied long radius on sizes 1", 1 1/2" & 2" - short radius on sizes 3".

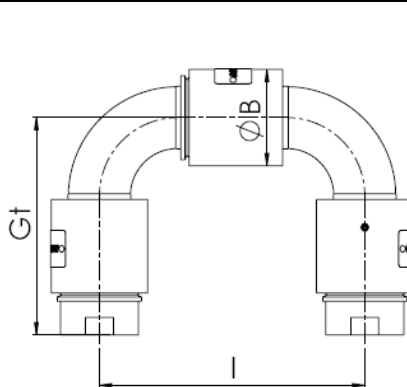
ROTAFLOW PROVIDE A DESIGN SERVICE

Assistance can be given on the configuration of joints for space saving in difficult areas, high pressure and larger bore designs. PTFE seals are offered as standard. Other materials including Nitrile, Fluorocarbon (Viton®), Aflas®, HNBR, EPDM are available.

Aflas is a trademark of Asahi Glass.
Viton is a trademark of DuPont Performance Elastomers



Style: 7 (80)



Style: 8 (10)

Drawings above are not to scale and are used for graphical representation only.

Copyright © 2016 Rotaflow FV LTD

Rotaflow FV Limited

Rotec House, Bingswood Trading Estate, Whaley Bridge, High Peak, SK23 7LY
www.rotaflow.com tel:+44(0)1663 735003 fax:+44(0)1663 735006
email:sales@rotaflow.com

Tech Spec:
219/161026
Page 1 of 1