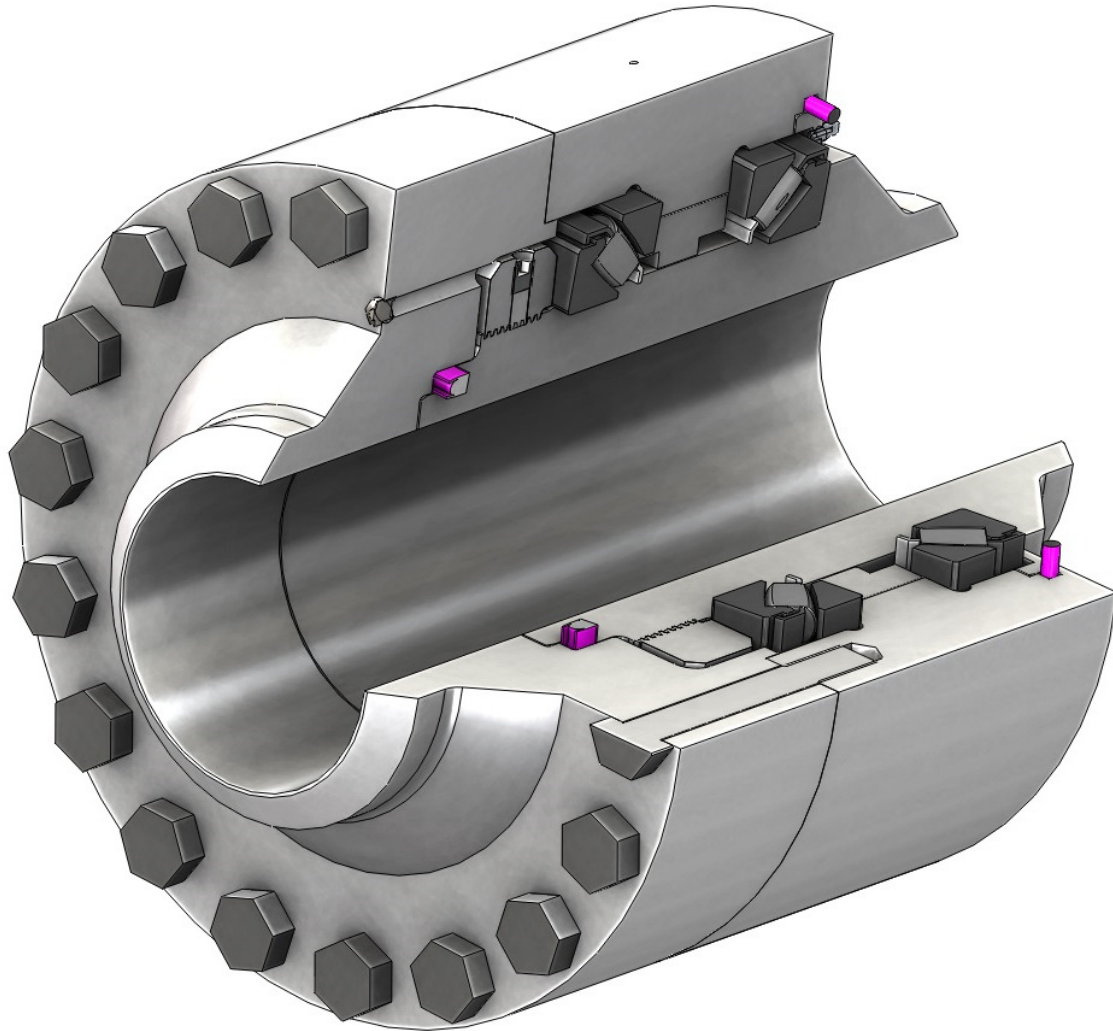




HIGH PRESSURE SWIVEL JOINTS

NOMINAL BORE 1" TO 24"



High Pressure Design Swivel Joint

- Proven in the field at **15,000 PSI** (1034 Bar). Factory tested designs rated up to 27,000 PSI for intermittent and continuous rotation.
- Testing to **40,500 PSI** (2800 Bar) Static.
- PTFE Seals for a wide range of medium compatibility and good temperature operating range (-70°C to 200°C) with minimal torque drag (resistance to rotation between the fixed and rotating elements).
- Tough tapered or spherical roller bearings to take high radial, axial and bending loads. And to keep torque to turn to a minimum.
- Leak detection ports incorporated for early detection of any seal leakage.
- Available in Carbon Steel, Stainless Steel, other metals on application.
- Bespoke manufactured to customers specific duty requirements.
- Manufactured to customers end condition i.e Elbows, Flanges fully welded. (Coded welding and testing to full P.E.D requirements if required).

Copyright © 2016 Rotaflo FV LTD

Rotaflo FV Limited

Rotec House, Bingswood Trading Estate, Whaley Bridge, High Peak, SK23 7LY
www.rotaflo.com tel:+44(0)1663 735003 fax:+44(0)1663 735006
email:sales@rotaflo.com

Tech Spec:
153/161026
Page 1 of 1